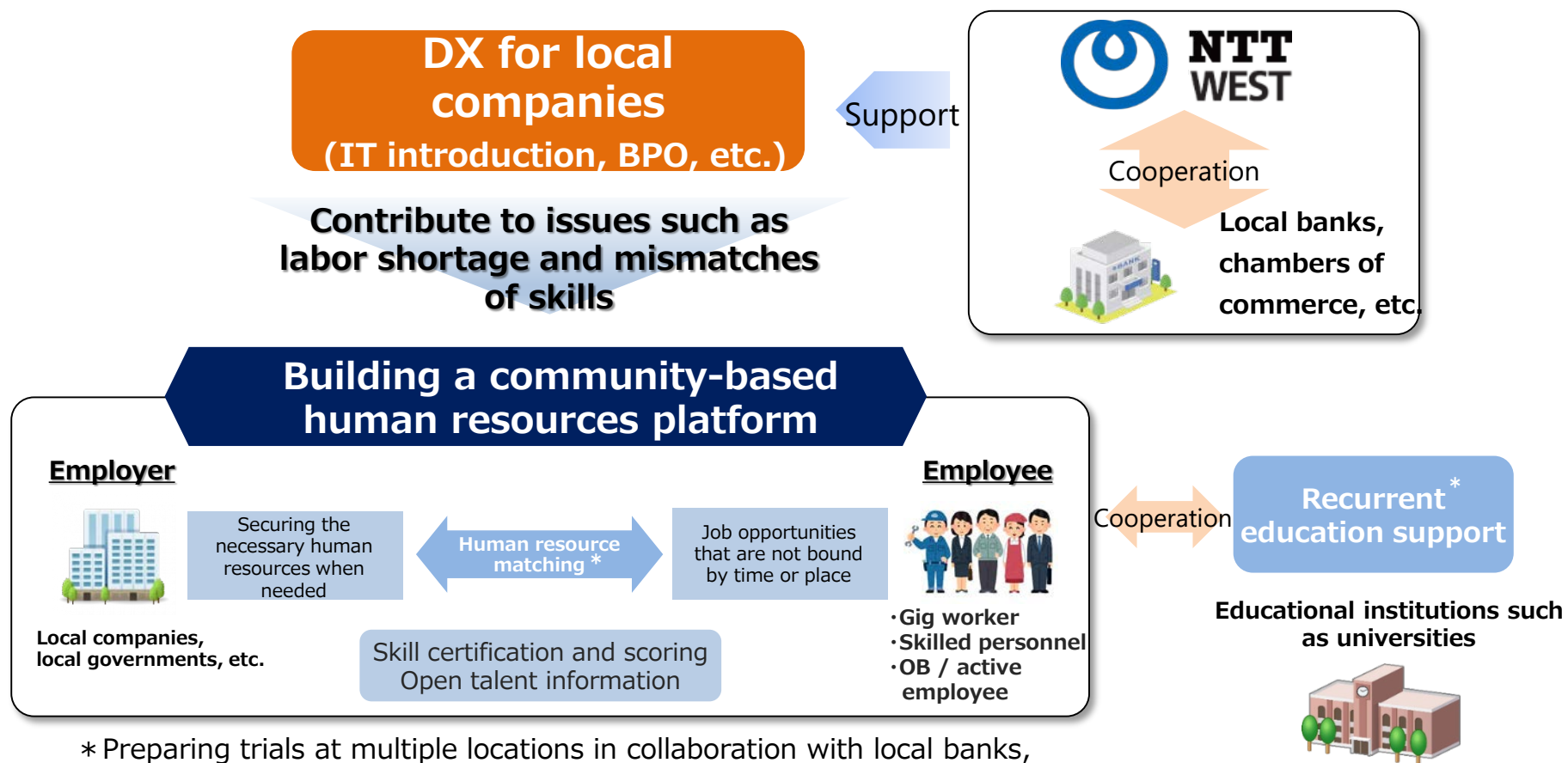




- Building a "regional collaborative human resources platform" on a regional basis for industrial revitalization and employment support, triggered by DX support from local companies
- Supporting diverse work styles that are not tied to time and place in response to the rebalancing of employment due to changes in the industrial structure and the spread of rural distribution and remote societies



* Preparing trials at multiple locations in collaboration with local banks, universities, temporary staffing companies, etc.

