

N T T W E S T

Corporate Profile

Contents

● Corporate Data	3
● Directors and Auditors	4
● Organization Chart	5
● Financial Summary	6
● Group Companies	7

As of March 31, 2018

Corporate Data

- **Corporate Name** NIPPON TELEGRAPH AND TELEPHONE WEST CORPORATION

- **Head Office Address** 3-15 Bamba-cho, Chuo-ku, Osaka 540-8511

- **Date of Establishment** July 1, 1999

- **Capital** 312 billion yen

- **Stock** Total number of shares held: 24,960,000
Total number of shares issued: 6,240,000
Number of shareholders: 1 (NIPPON TELEGRAPH AND TELEPHONE CORPORATION)

- **Total Employees** 3,950 employees

- **Offices** Headquarter
Regional Headquarters : Kansai, Tokai, Hokuriku, Chugoku, Shikoku, Kyusyu
Branch : In each prefecture

- **Business** Regional telecommunications services^{*1} in the west areas of Japan,^{*2} incidental business activities, business activities to achieve the purpose of the company, business activities to utilize the company's resources.
 - *1 Telephone Services (intra-prefectural communications), Integrated Digital Communications Services (Basic mode, intra-prefectural communications), Leased Circuit Services (intra-prefectural communications), and so on
 - *2 Toyama, Ishikawa, Fukui, Gifu, Shizuoka, Aichi, Mie, Shiga, Kyoto, Osaka, Hyogo, Nara, Wakayama, Tottori, Shimane, Okayama, Hiroshima, Yamaguchi, Tokushima, Kagawa, Ehime, Kochi, Fukuoka, Saga, Nagasaki, Kumamoto, Oita, Miyazaki, Kagoshima and Okinawa

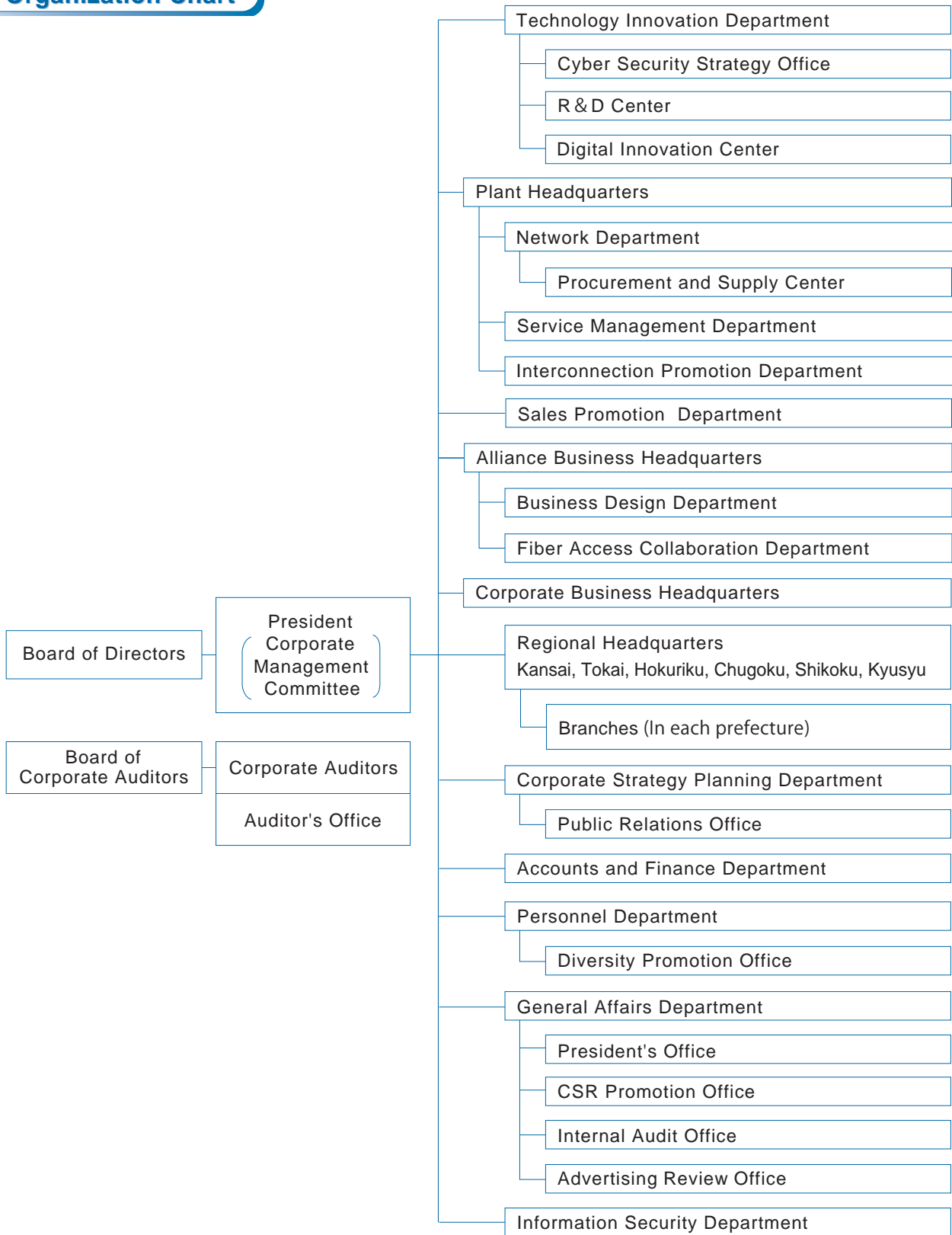
As of June 22, 2018

Directors and Auditors

Post	Name
● President	Mitsuyoshi Kobayashi
● Senior Executive Vice Presidents	Yoshihiro Kuroda Shozo Ito
● Executive Vice President	Yasushi Tohtake
● Senior Vice Presidents	Kou Ikeda Ichiro Uehara Teruyuki Kishimoto Naoki Yamamoto Takafumi Sakaguchi Kousuke Nagano Kunihiro Yamada Keiji Ueyama Masanori Ozawa Tsukasa Komeda Takashi Inomata Ryota Kitamura
● Corporate Auditors	Kimiko Ohga Mamoru Murai Syunichi Okazaki

As of April 1, 2018

Organization Chart



Financial Summary

● Non-Consolidated Financial Results for the Year Ended March 31, 2018

April 1, 2017 - March 31, 2018
(Based on accounting principles generally accepted in Japan)

[Operating Results]

(Billions of Yen)

Details	Year Ended March 31		Increase (Decrease)	Percent Increase (Decrease)
	2018	2017		
Operating Revenues	1,432.9	1,479.0	(46.0)	(3.1%)
Operating Expenses	1,265.4	1,383.8	(118.3)	(8.6%)
Operating Income	167.4	95.1	72.2	75.9%
Non-Operating Income	(3.7)	(7.0)	3.2	-
Recurring Profit	163.7	88.1	75.5	85.7%
Income before Income Taxes	99.8	81.2	18.5	22.9%
Income Taxes	27.3	21.4	5.9	27.5%
Net Income	72.4	59.7	12.6	21.2%

[Assets, Liabilities and Net Assets]

(Billions of Yen)

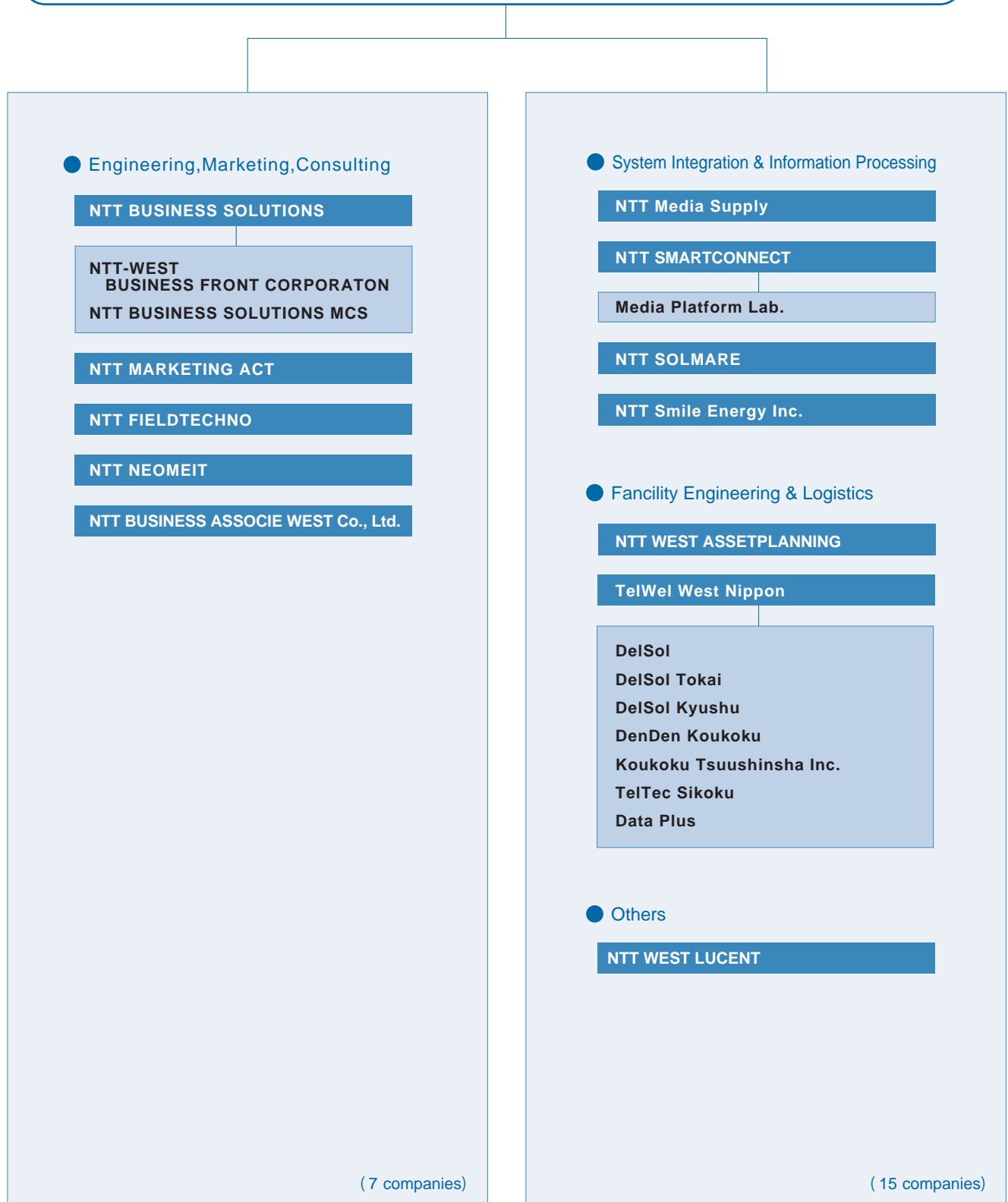
Details	March 31, 2018	March 31, 2017	Increase (Decrease)	Percent Increase (Decrease)
Fixed Assets	2,683.0	2,704.3	(21.2)	(0.8%)
Current Assets	355.4	399.3	(43.9)	(11.0%)
Total Assets	3,038.4	3,103.7	(65.2)	(2.1%)
Long-Term Liabilities	1,014.1	859.0	155.0	18.1%
Current Liabilities	403.6	665.2	(261.6)	(39.3%)
Total Liabilities	1,417.8	1,524.3	(106.5)	(7.0%)
Interest-Bearing Debts *	709.1	806.9	(97.8)	(12.1%)
Total Net Assets	1,620.6	1,579.3	41.3	2.6%
Total Liabilities and Net Assets	3,038.4	3,103.7	(65.2)	(2.1%)

* Partial listing only

As of July 1, 2018

Group Companies

NIPPON TELEGRAPH AND TELEPHONE WEST CORPORATION



Note: ■ Ownership more than 50%

Note: ■ Indirect ownership more than 50%

